

PlateMaker⁶

COMPLETE POLYESTER CTP SYSTEM

WORKFLOW:

iQueue Ultimate Prepress Workflow

INTERNAL RIP:

Adobe® PostScript® 3™

SCREENING TECHNOLOGY:

Z-Dot™ with Traditional Screens

LINESCREEN / RESOLUTION:

Up to 150+ LPI / 2400 DPI

AUTO PLATE LOADER:

50 Plate Capacity

PLATE RUN LENGTH:

>20,000 Impressions

SPEED:

Up to 120 Plates Per Hour

iQueue



POWERED BY



The Xanté PlateMaker 6 CTP System is the affordable solution that allows you to produce high quality, high resolution polyester plates without processing or chemicals. The complete CTP solution features the iQueue Ultimate Workflow that automates prepress production and streamlines the entire platemaking process.

PlateMaker⁶

Z-7 Technology: Delivers a clean plate with sharp images and accurate registration. The unique Z-Dot™ screening allows the PlateMaker 6 to print Myriad 2 polyester plates with the cleanest screens possible from an electrophotographic process.

Adobe® Postscript® 3™: True Adobe PostScript 3 offers reliability, increased performance, and the assurance of compatibility to work from virtually any software application and hardware environment.

Xanté Accurate Calibration Technology (X-Act™): Our patented Accurate Calibration Technology gives you precise control over horizontal and vertical dimensions on page images ensuring unmatched output accuracy.

Advanced Halftone Calibration: Now you can calibrate plate output to match production needs. Use the automated Quick Calibration, or the Advanced Calibration feature which allows you to fine tune the PlateMaker 6 to your specific environment.

340MM Output Option: Provides the option to print a 13³/₈" wide plate. It also includes a Pinbar Alignment feature that allows users to print vertical lines at the top of each plate. This line can be used as an accurate guide when punching multiple plates in two and three-color jobs.

Chemical-Free, Process-Free: Non-Electrostatic Plates: Supports chemical-free plate making using Myriad 2 polyester plates, making computer to plate printing more cost effective and less time consuming.

Multi-Plate Loader: Allows operators to stack up to 50 Myriad 2 polyester plates, walk away and return to crisp, clear output.

Web Interface: Enter the IP address of the PM6 in the address bar of your web browser to check the printer's status, rename it, align plates and much more.

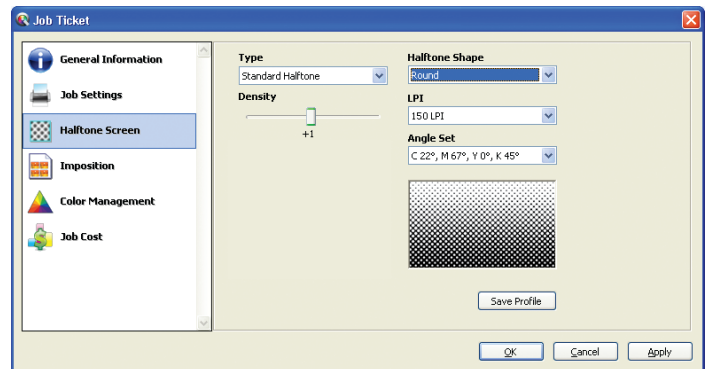
PlateMaker 6 Specifications

Imaging Speed	Up to 120 plates per hour
Resolutions	1200 x 1200 dpi (standard), 2400 x 2400 dpi (optional)
Processor	Fast IDT 79RC32355
Memory	Standard 128 MB SODIMM, expandable up to 256 MB; Optional internal IDE drive available
Imaging Unit IU Life	Self Contained Proprietary 7,000 sheets, (letter; 5% coverage)
Myriad 2 Plates	Available in the following sizes: 10" x 15", 10" x 15 ¹ / ₂ ", 11" x 18", 11" x 18 ¹ / ₂ ", 11 ³ / ₄ " x 18 ¹ / ₂ ", 11 ³ / ₄ " x 19 ³ / ₈ ", 11 ³ / ₄ " x 19 ³ / ₈ ", 11 ³ / ₄ " x 19 ⁷ / ₈ ", 12" x 18", 12" x 19 ³ / ₈ ", 12" x 19 ⁷ / ₈ ", 12" x 25", 13" x 19 ³ / ₈ ", 13" x 19 ⁷ / ₈ "
340mm Option	13 ³ / ₈ " x 19 ⁷ / ₈ " (340mm x 505mm)
Media Weights	4 mil plates - Plate Auto Loader
Plate Input	50-plate auto loader (standard)
Dimensions	(W) 22.8" x (H) 16.24" x (D) 23.68" with cassette
Weight	73.3 lbs.
Power	100-127 V~50/60 Hz, 6.5 A (220-240 V~50/60 Hz, 3.2 A)
Noise Level	Printing - less than 49.5 dB; Standby - less than 35 dB
Printer Language	Adobe PostScript 3
Typefaces	136 resident PostScript Typefaces; TrueType® 42 font rasterizer; Types 1/3/4/5/6 PostScript download support
Interface	Simultaneously active - 10/100BaseT Ethernet® (EtherTalk®, TCP/IP, LPR, IPP)

iQueue ULTIMATE

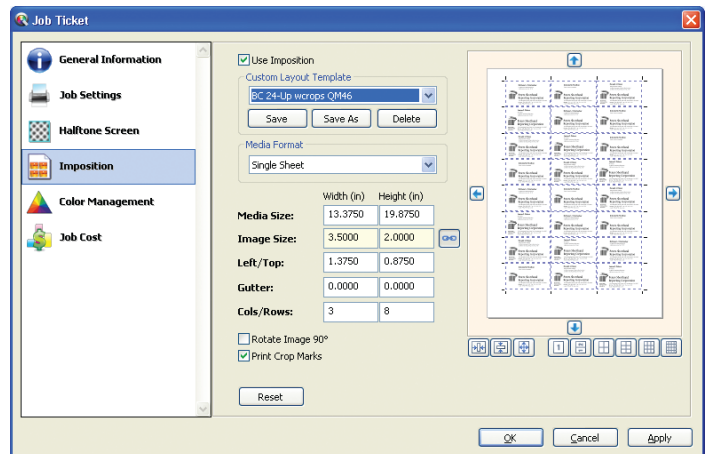
Prepress Workflow: iQueue Ultimate was designed to help PlateMaker 6 users manage multiple digital files, set job priorities and increase overall shop production and plate image quality. iQueue allows operators to setup digital files and produce a quality plate to suit a variety of presses and work methods.

Job Ticket Editor: Each job sent to iQueue is assigned a job ticket. iQueue's job ticket editor allows you to control specific job settings such as: media size, resolution, linescreens, screening types, screen angles, densities, and more.



Screening Options: iQueue gives you a wide variety of screening options. Select the desired linescreen (from 10 LPI to 150 LPI), screen angle, and halftone shape (Round, Ellipse, Euclidean, Line, Inverted Dual Line, Dual Dot and more).

iQueue Density Control: iQueue users can quickly make imager density adjustments manually, or users can create their own custom density profiles. Once saved, density profiles can be applied automatically to specific jobs.



iQueue Imposition / Templating: Now you can quickly impose digital files with single or multiple pages using iQueue Imposition. Set the desired media (plate) size, margins, number of columns and rows. You may also rotate templates, add crop marks, or use the nudge feature to move templates left/right, or up/down. iQueue operators can choose to use one of iQueue's standard imposition templates, or create and save custom templates that can be used again, and again.

XANTÉ

USA: 800.926.8839 / 251.473.6502 / xante.com
2800 Dauphin Street, Mobile, AL 36606
EU: +31 (0) 26 319 3210 - Marketing 1
Marketing 1 - 6921 RE Duiven, The Netherlands



©2010 Xanté Corporation. Xanté, the Xanté logo, Z/7 and PlateMaker 6 are registered trademarks of Xanté Corporation. Adobe, PostScript and Clearly Adobe Imaging are registered trademarks of Adobe Systems, Inc. AGFA and the Agfa rhomb and Myriad 2 are trademarks of Agfa-Gevaert AG.