

XANTÉ Customer Downloader Instructions*

For the latest XANTÉ product code
PC

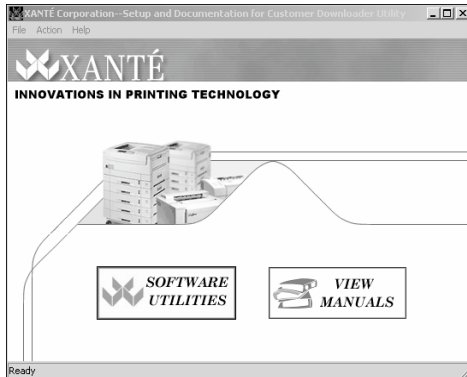
You will need to install the XANTÉ Downloader Utility in order to update your XANTÉ printer's firmware code.

TO INSTALL XANTÉ DOWNLOADER UTILITY:

1. Go to www.xante.com/update to get the Flash Downloader Utility for your PC.
2. Select **Windows** under the Utilities Downloader section to download the Flash Downloader.

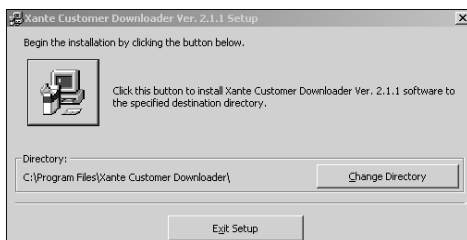


*For Windows NT/2000/XP Operating Systems only.

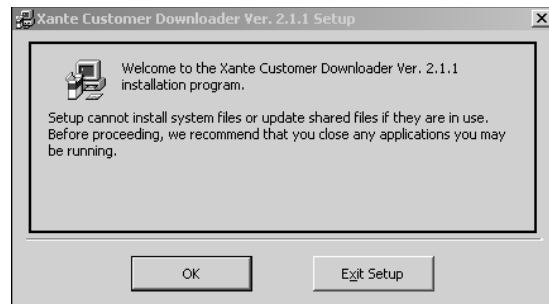
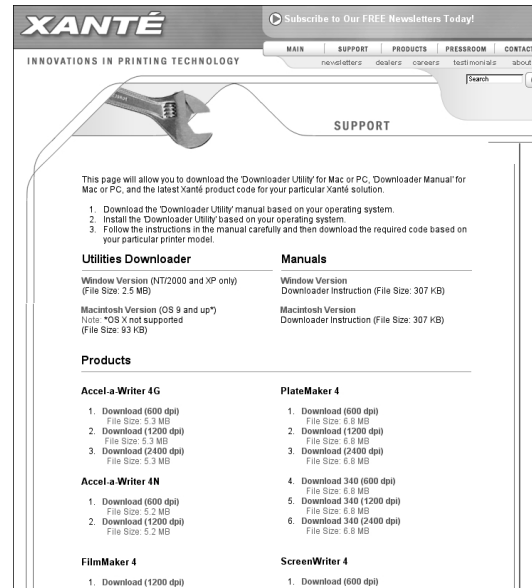


Step 3: Click Software Utilities from the Main Screen.

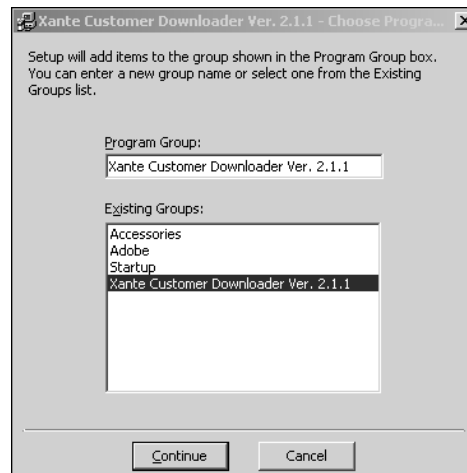
Note: Change the location directory if needed by selecting **Change Directory** in this window.



Step 5: Click the Install Icon to install the XANTÉ Downloader Utility to the specified directory.



Step 4: Read Setup window. Click OK.



Step 6: Click Continue in the Group Setup Window. After setup is complete, click OK.

Congratulations! You have successfully installed the XANTÉ Customer Downloader. Continue on to “*Downloading New Code*” to learn how to download your printer’s new firmware code and how to apply it.

Downloading New Code For Your XANTÉ Printer PC

Note: Before you begin this process, print a startup page from your XANTÉ Printer that has your printer’s IP Address, Product ID number, and Firmware key listed. If the startup page is disabled, you can simply press **Online> Test** on your printer’s display screen to print one.

1. Refer back to www.xante.com/update to download your XANTÉ printer’s new code.
2. Select your printer from the list of XANTÉ printers with the appropriate DPI. Then, click Download.
3. Save your XANTÉ printer’s new code to your desktop.

APPLYING THE NEW CODE TO YOUR XANTÉ PRINTER

Note: This process is for Accel-a-Writer 4G, Accel-a-Writer 4N, PlateMaker 4, ScreenWriter 4, and FilmMaker 4 (USB model) printers only.

1. Make sure the printer is off.
2. Depress and hold the TEST and ENTER keys on your printer’s keypad. Then, turn on the printer. ***Do not*** release the keys until told to do so on the printer’s LCD display screen.
3. Release buttons when prompted. Confirm IP address on the printer’s display screen is the same as the one on the startup page.

Note: If IP addresses are different, please contact XANTÉ Technical Support at 1-800-926-8393 (US and Canada) or www.xante.com/support.

To Setup TCP/IP on a Cross-over Cable

- a. From your computer's desktop, right-click My Network Places and select Properties.
- b. Right-click Local Area Connection and select Properties (fig. 1).

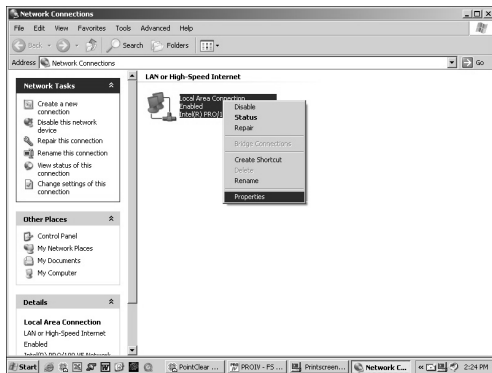


Fig. 1 Local Area Connection Window

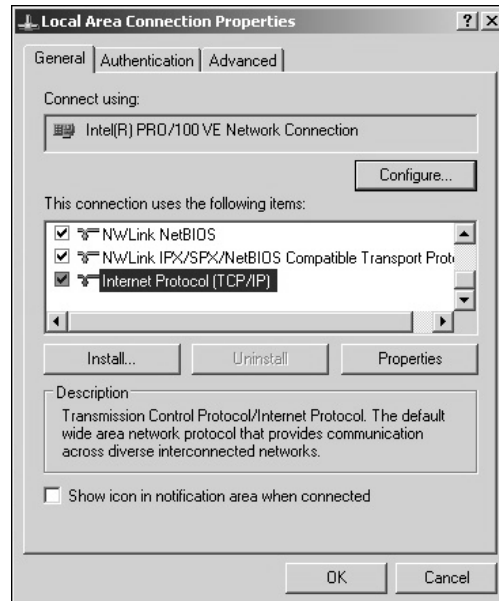


Fig. 2 TCP/IP Window

- c. Double-click Internet Protocol (TCP/IP) (fig. 2). Then, select "Use the Following IP address" and enter desired IP address (fig. 3).

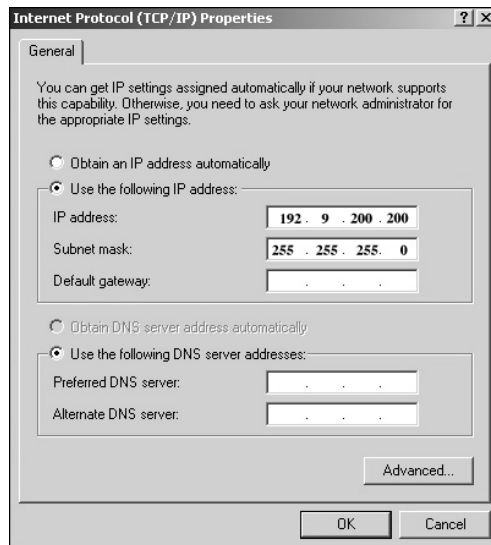
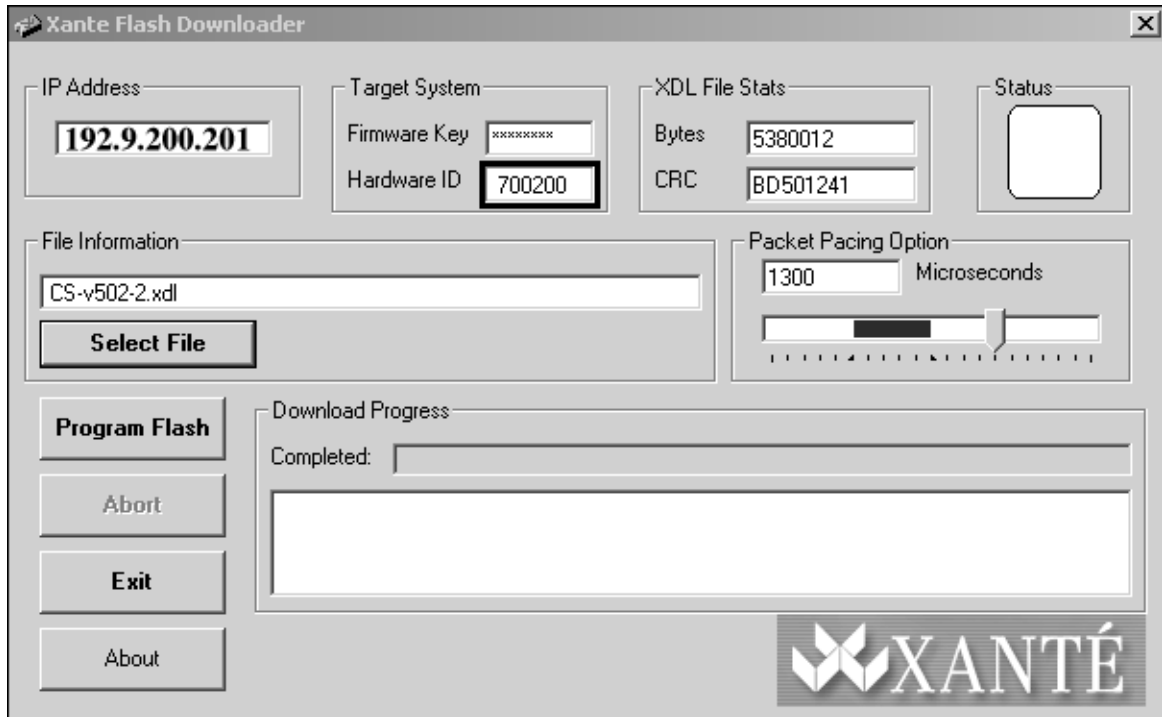


Fig. 3 Enter Desired IP Address

- d. Enter an IP address that is compatible to your printer (for example, use 192.9.200.200 if your printer is 192.9.200.201).
 - e. Enter a subnet address of 255.255.255.0 and remove any other router/DNS/ server information from the window. Save the new settings.
 - f. Select OK and close all windows. Then, restart computer.
4. Click Start: Programs: XANTÉ Customer Downloader. The XANTÉ Flash Downloader screen appears.



Flash Downloader Screen

5. Enter your printer's IP address (if needed) in the top left box.
6. Click **Select File** to search for your new code. Once your new code is highlighted in the box, check to make sure the Hardware ID number corresponds to the Product ID number on the startup page. If it doesn't match, verify the printer type and model with the download. You will not be able to update your printer if these numbers do not match.
7. Click **Program Flash** to install the new code for your XANTÉ printer.
8. Confirm the new code version on the startup page once the printer reinitializes.

Note: If you get errors or excessive timeout messages while the new code is being installed, increase the Packet Pacing Option and try again.

Note: Download is complete when the Status box in the upper right corner turns green. However, the printer must erase and reprogram its internal flash with the downloaded software. This process takes approximately five minutes to complete. The printer is ready to print after it reinitializes itself and returns to Ready/ Idle status.

Technical Support

- **Phone**
1-800-926-8393 (US and Canada)
+31-26-319-3210 (Europe)
All other areas, contact your XANTÉ Dealer
- **Fax**
(251) 473-6503
- **Email**
techsupport@xante.com
europesupport@xante.com
- **Hours of Operation**
7 a.m. - 6 p.m. CST
Monday—Friday

XANTÉ