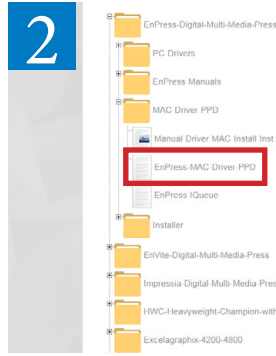


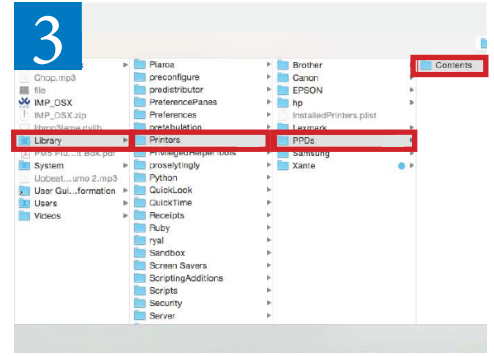
# Mac Driver Installation



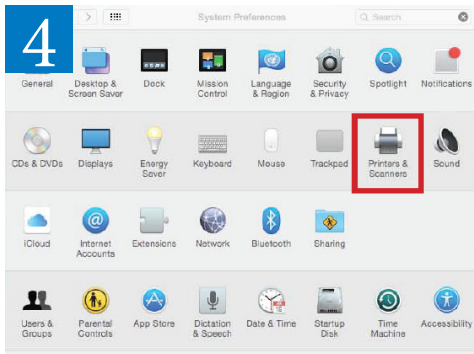
Open a web browser and go to [www.Xante.com](http://www.Xante.com). Move your mouse cursor over



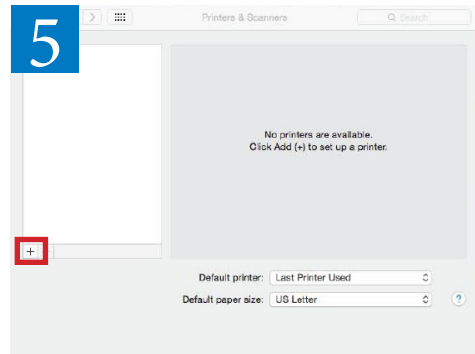
Locate your printer model, expand the option, and download the Mac Driver PPD.



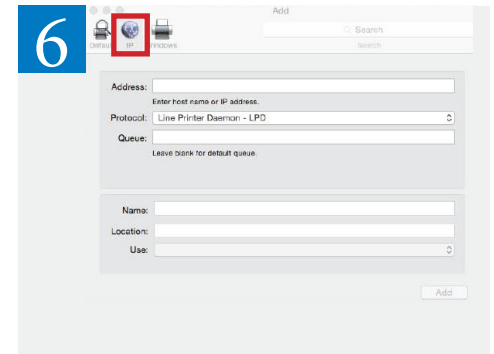
Save or copy the PPD file into the following directory: Library > Printers > PPDs



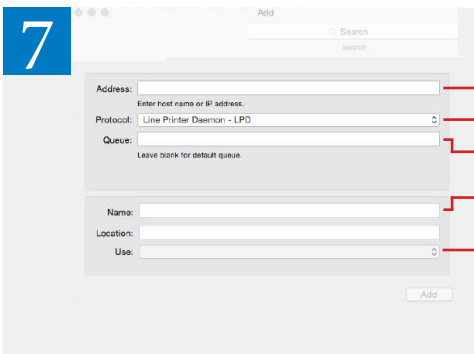
Open System Preferences from the Apple logo at the top left. Press Printers & Scanners.



Press the Add Printer button.

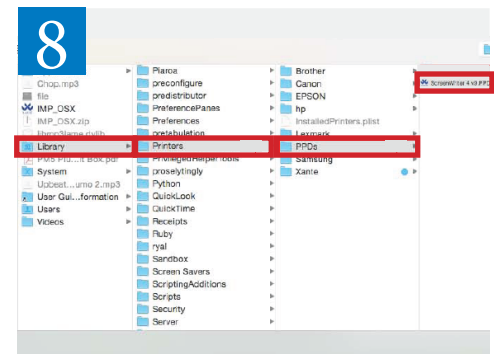


Press the IP button.

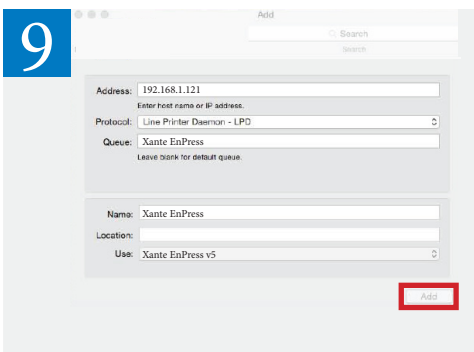


- Enter the Printer's IP Address
- Select Line Printer Daemon - LPD
- Enter the selected name. Ex. Xante EnPress
- Enter the selected name. Ex. Xante EnPress
- Click the Use Box and select Other. The menu shown in Step 8 opens.

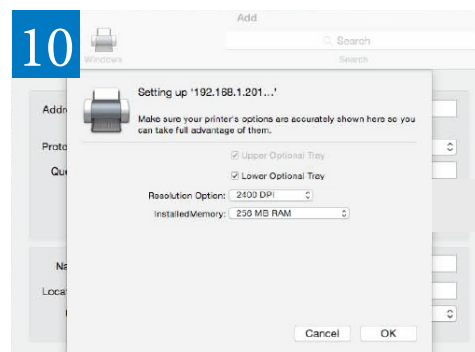
Enter the following information:



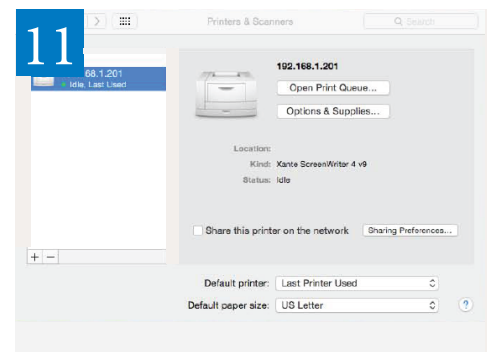
Find the PPD saved in Step 3 in the following directory: Library > Printers > PPDs. Open the PPD.



Press the Add button.



Choose the options available for your printer. Press Ok.



The print driver is added.